

# Bench Rest Rifle Club of St. Louis

## Travel Planner

Benchrest Club is located about 7 miles northwest of Wright City, MO. Wright City is approximately 50 miles west of the St. Louis Metropolitan area. Wright City has limited facilities but nearby Warrenton and Wentzville have lots of options.

Warrenton, MO, located about 6 miles west of Wright City, at Exit No. 193, offers a wide selection of motels and restaurants.

Wentzville, MO is approximately 9 miles east of Wright City, at Exit No. 208, also offers a lot of choices for motels and restaurants.

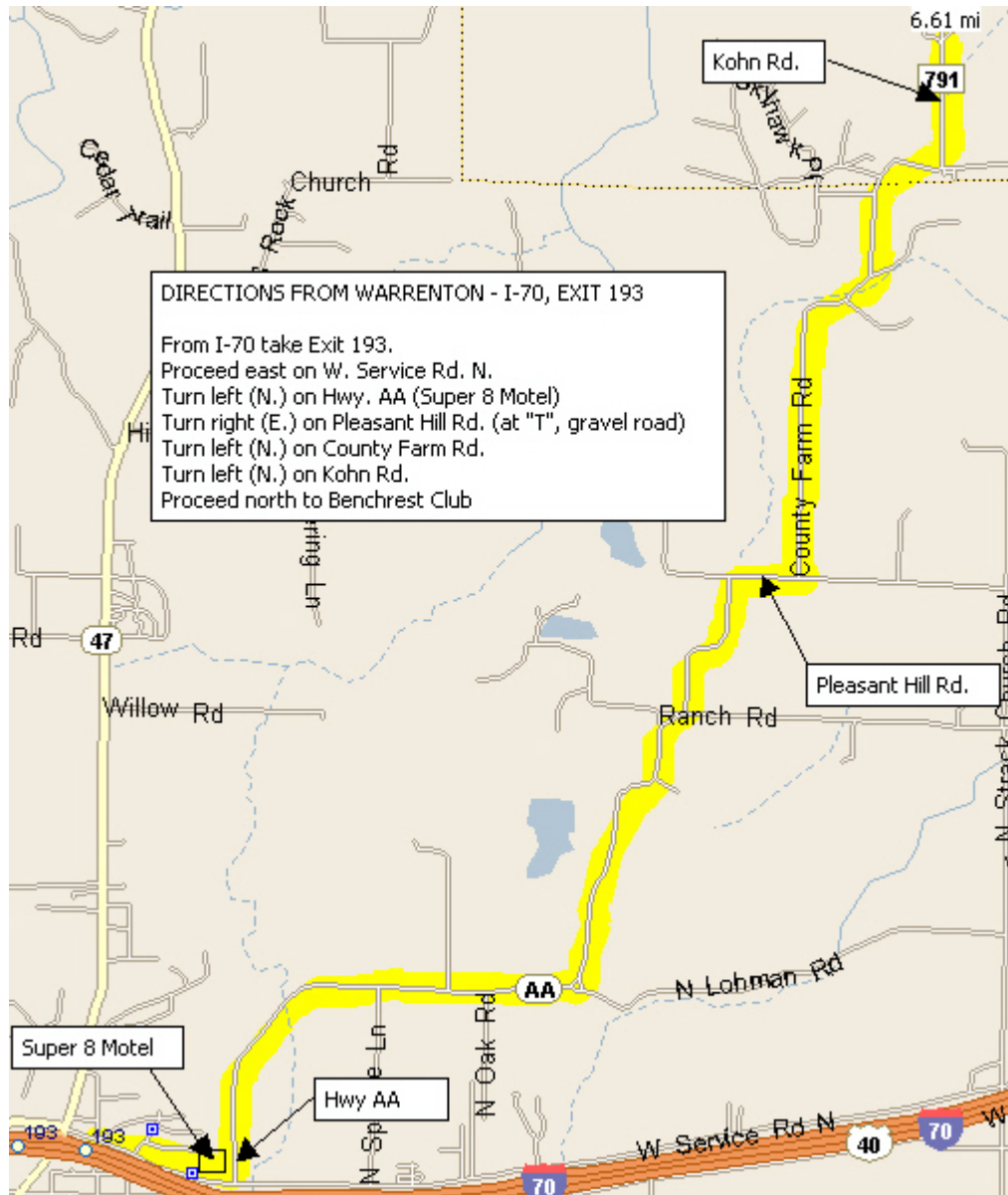
### Hotels

Exit No.	Motel	Toll-Free Phone	Local Phone
214	Days Inn, Lake St. Louis	800-329-7466	636-625-1711
212	Holiday Inn, Lake St. Louis		636-327-7001
210B	Knights Inn, Wentzville	800-843-5644	636-327-5212
210B	Budget Inn, Wentzville		636-639-1987
208	Super 8 Motel, Wentzville	800-800-8000	636-327-5300
203	Best Western, Foristell	800-937-8376	636-673-2900
199	I-70 Budget Motel, Wright City		636-745-8016
193	AmeriHost Inn, Warrenton	800-434-5800	636-456-6000
193	Days Inn, Warrenton	800-329-7466	636-456-4301
193	Super 8, Warrenton	800-800-8000	636-456-5157

### Contact Info

Benchrest Club of St. Louis  
2045 Kohn Rd.  
Wright City, MO 63390  
636-745-8144  
636-745-7868 fax  
[www.shootingstl.com](http://www.shootingstl.com)

# Directions from Warrenton, MO



# Directions from Wright City, MO

